

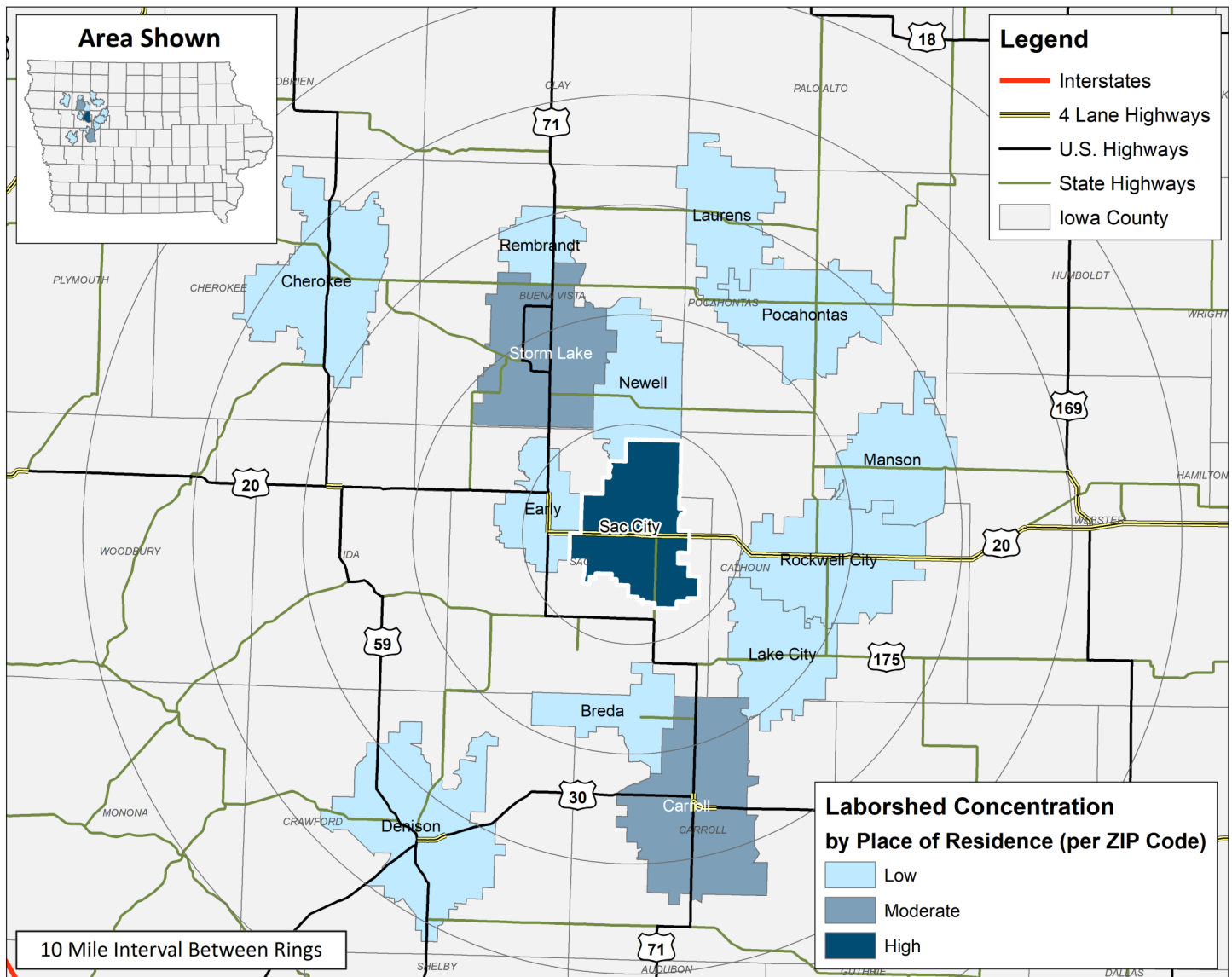
LABOR CHARACTERISTICS

ADVANCED MANUFACTURING



SAC CITY LABORSHED AREA

**CONCENTRATION OF RESPONDENTS WITHIN THE LABORSHED AREA
WITH TRANSFERABLE EXPERIENCE/SKILLS BY PLACE OF RESIDENCE**



Workers who have transferable experience/skills in the industry are currently commuting an average of 15 miles one way for work. Those who are likely to change/accept employment are willing to commute an average of 20 miles one way for the right employment opportunity.

FOR MORE INFORMATION REGARDING THE SAC CITY, IA LABORSHED, CONTACT:

LABOR CHARACTERISTICS

ADVANCED MANUFACTURING

ESTIMATED AVAILABLE LABOR PER OCCUPATIONAL CATEGORY:

- Architectural & Engineering Managers - 114
- Electricians - 116
- Engineers, All Other - 115
- Heavy & Tractor-Trailer Truck Drivers - 1,186
- Industrial Production Managers - 237
- Installation, Maintenance, & Repair Workers - 474
- Laborers & Freight, Stock, & Material Movers, Hand - 123
- Light Truck or Delivery Services Drivers - 122
- Machinists - 119
- Multiple Machine Tool Operators - 356
- Production Workers, All Other - 949
- Supervisors of Mechanics, Installers, & Repairers - 238
- Supervisors of Production & Operating Workers - 117
- Team Assemblers - 118
- Water & Wastewater Treatment Plant & System Operators - 121
- Welders, Cutters, Solderers, & Brazers - 120

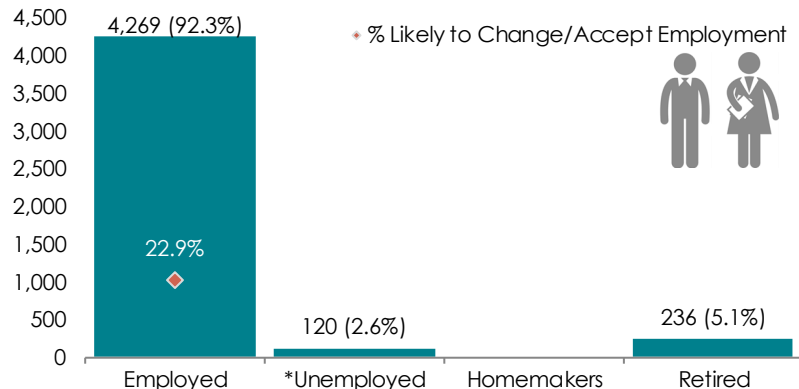
AN ESTIMATED TOTAL OF **4,625** PEOPLE IN THE LABORSHED AREA

UNDEREMPLOYMENT (ESTIMATED):

- Low hours - 0.0%
- Low income - 0.0%
- Mismatch of skills - 2.6% (13)
- Total - 2.6% (13)

(Individuals counted only once when estimating Total Underemployment.)

ESTIMATED TOTAL BY EMPLOYMENT STATUS (PERCENTAGE):



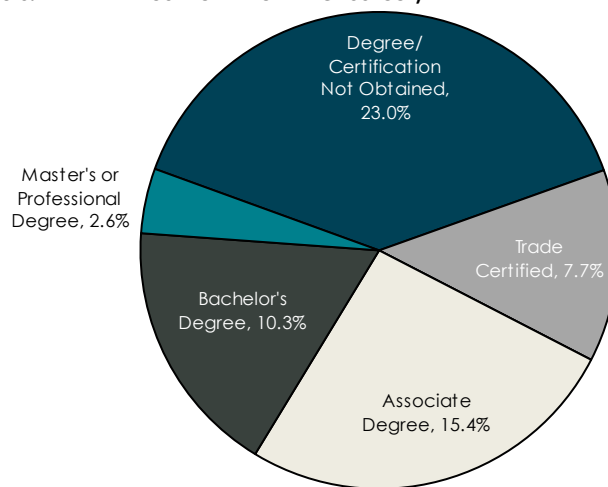
*Employment status is self-identified by the survey respondent. The unemployment percentage does not reflect the unemployment rate published by the U.S. Bureau of Labor Statistics, which applies a stricter definition.

EMPLOYMENT STATS:

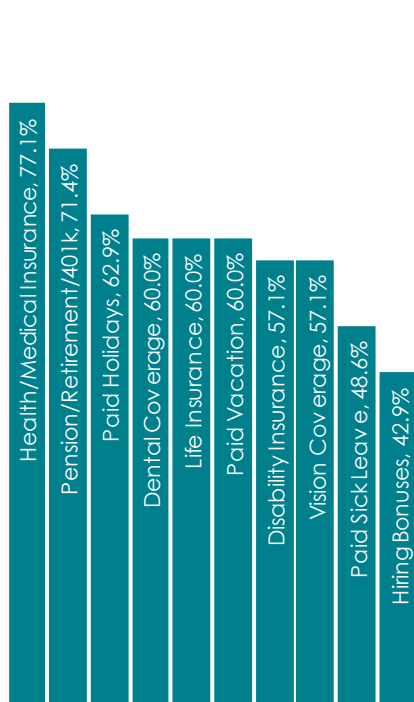
- 66.7% paid an hourly wage
- 89.7% are/were employed full-time
- 10.3% are/were employed part-time
- 10.3% are/were self-employed
- 19.4% hold two or more jobs
- Currently working an average of 52 hours/week

EDUCATIONAL LEVEL:

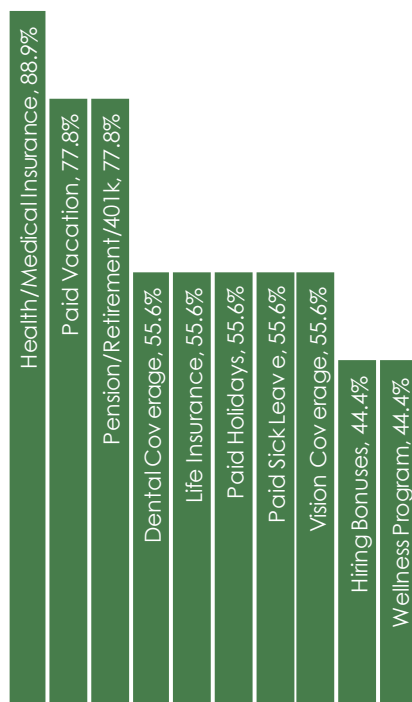
(59.0% HAVE AN EDUCATION BEYOND HIGH SCHOOL)



CURRENT BENEFITS:



DESIRED BENEFITS:



TOP JOB SEARCH RESOURCES:

(For those seeking employment opportunities, by use.)

- Internet - 65.8%
 - www.indeed.com
 - www.facebook.com
 - www.iowaworks.gov
- Newspapers - 31.6%
- Networking through friends, family or acquaintances - 28.9%
- IowaWORKS Centers - 26.3%

WORKPLACE FLEXIBILITY:

(by percent of interest)

- Cross-training - 75.0%
- Job teams - 75.0%
- Varied shifts - 66.7%
- Job sharing - 37.5%
- Seasonal work - 55.6%
- Temporary work - 55.6%

LABOR CHARACTERISTICS



ADVANCED MANUFACTURING

| OCCUPATION | OCCUPATIONAL CODE | MEAN WAGE | ENTRY WAGE | EXPERIENCED WAGE | MEDIAN WAGE | MEAN ANNUAL SALARY |
|---|-------------------|-----------|------------|------------------|-------------|--------------------|
| Architectural and Engineering Managers | 11-9041 | \$53.06 | \$41.24 | \$58.97 | \$51.12 | \$110,363 |
| Assemblers and Fabricators, All Other | 51-2099 | \$15.52 | \$12.93 | \$16.82 | \$14.95 | \$32,285 |
| Bus and Truck Mechanics and Diesel Engine Specialists | 49-3031 | \$19.54 | \$15.49 | \$21.56 | \$18.53 | \$40,633 |
| Conveyor Operators and Tenders | 53-7011 | \$17.43 | \$14.50 | \$18.89 | \$16.93 | \$36,246 |
| Crushing, Grinding, and Polishing Machine Setters, Operators, and Tenders | 51-9021 | \$17.54 | \$15.77 | \$18.43 | \$17.41 | \$36,490 |
| Cutting, Punching, and Press Machine Setters, Operators, and Tenders, Metal and Plastic | 51-4031 | \$16.47 | \$13.27 | \$18.06 | \$16.20 | \$34,250 |
| Electricians | 47-2111 | \$23.19 | \$16.83 | \$26.38 | \$24.32 | \$48,240 |
| Engineers, All Other | 17-2199 | \$36.73 | \$21.93 | \$44.13 | \$32.77 | \$76,406 |
| First-Line Supervisors of Mechanics, Installers, and Repairers | 49-1011 | \$32.85 | \$25.64 | \$36.46 | \$31.77 | \$68,328 |
| First-Line Supervisors of Production and Operating Workers | 51-1011 | \$27.86 | \$19.50 | \$32.04 | \$27.29 | \$57,949 |
| Heavy and Tractor-Trailer Truck Drivers | 53-3032 | \$19.48 | \$14.98 | \$21.74 | \$18.47 | \$40,526 |
| Industrial Engineers | 17-2112 | \$39.38 | \$30.95 | \$43.60 | \$37.96 | \$81,915 |
| Industrial Machinery Mechanics | 49-9041 | \$22.24 | \$15.77 | \$25.48 | \$21.55 | \$46,262 |
| Industrial Production Managers | 11-3051 | \$45.09 | \$29.01 | \$53.13 | \$43.49 | \$93,787 |
| Industrial Truck and Tractor Operators | 53-7051 | \$18.70 | \$16.11 | \$19.99 | \$18.60 | \$38,889 |
| Inspectors, Testers, Sorters, Samplers, and Weighers | 51-9061 | \$21.42 | \$14.84 | \$24.71 | \$21.71 | \$44,548 |
| Installation, Maintenance, and Repair Workers, All Other | 49-9099 | \$19.50 | \$15.10 | \$21.70 | \$20.72 | \$40,554 |
| Laborers and Freight, Stock, and Material Movers, Hand | 53-7062 | \$16.46 | \$12.40 | \$18.50 | \$15.99 | \$34,247 |
| Light Truck or Delivery Services Drivers | 53-3033 | \$15.76 | \$9.40 | \$18.94 | \$13.44 | \$32,785 |
| Machinists | 51-4041 | \$18.19 | \$13.77 | \$20.39 | \$18.02 | \$37,827 |
| Maintenance and Repair Workers, General | 49-9071 | \$19.62 | \$14.07 | \$22.40 | \$19.97 | \$40,815 |
| Mixing and Blending Machine Setters, Operators, and Tenders | 51-9023 | \$17.28 | \$13.21 | \$19.31 | \$16.55 | \$35,934 |
| Molders, Shapers, and Casters, Except Metal and Plastic | 51-9195 | \$15.74 | \$12.01 | \$17.60 | \$15.28 | \$32,737 |
| Packaging and Filling Machine Operators and Tenders | 51-9111 | \$16.34 | \$14.75 | \$17.14 | \$16.74 | \$33,996 |
| Production Workers, All Other | 51-9199 | \$14.79 | \$11.68 | \$16.35 | \$14.28 | \$30,773 |
| Separating, Filtering, Clarifying, Precipitating, and Still Machine Setters, Operators, and Tenders | 51-9012 | \$20.67 | \$18.33 | \$21.84 | \$21.11 | \$42,992 |
| Water and Wastewater Treatment Plant and System Operators | 51-8031 | \$17.77 | \$12.31 | \$20.50 | \$17.37 | \$36,966 |
| Welders, Cutters, Solderers, and Brazers | 51-4121 | \$17.85 | \$14.71 | \$19.42 | \$17.34 | \$37,122 |

The 2019 Iowa Wage data for the Sac City Laborshed area was produced by the Labor Force & Occupational Analysis Bureau to provide communities local information on wages by occupation. The source of the wage and employment data is based on the May 2018 OES estimates. Additional occupational wage and employment data can be found at www.iowalmi.gov/laborshed.