

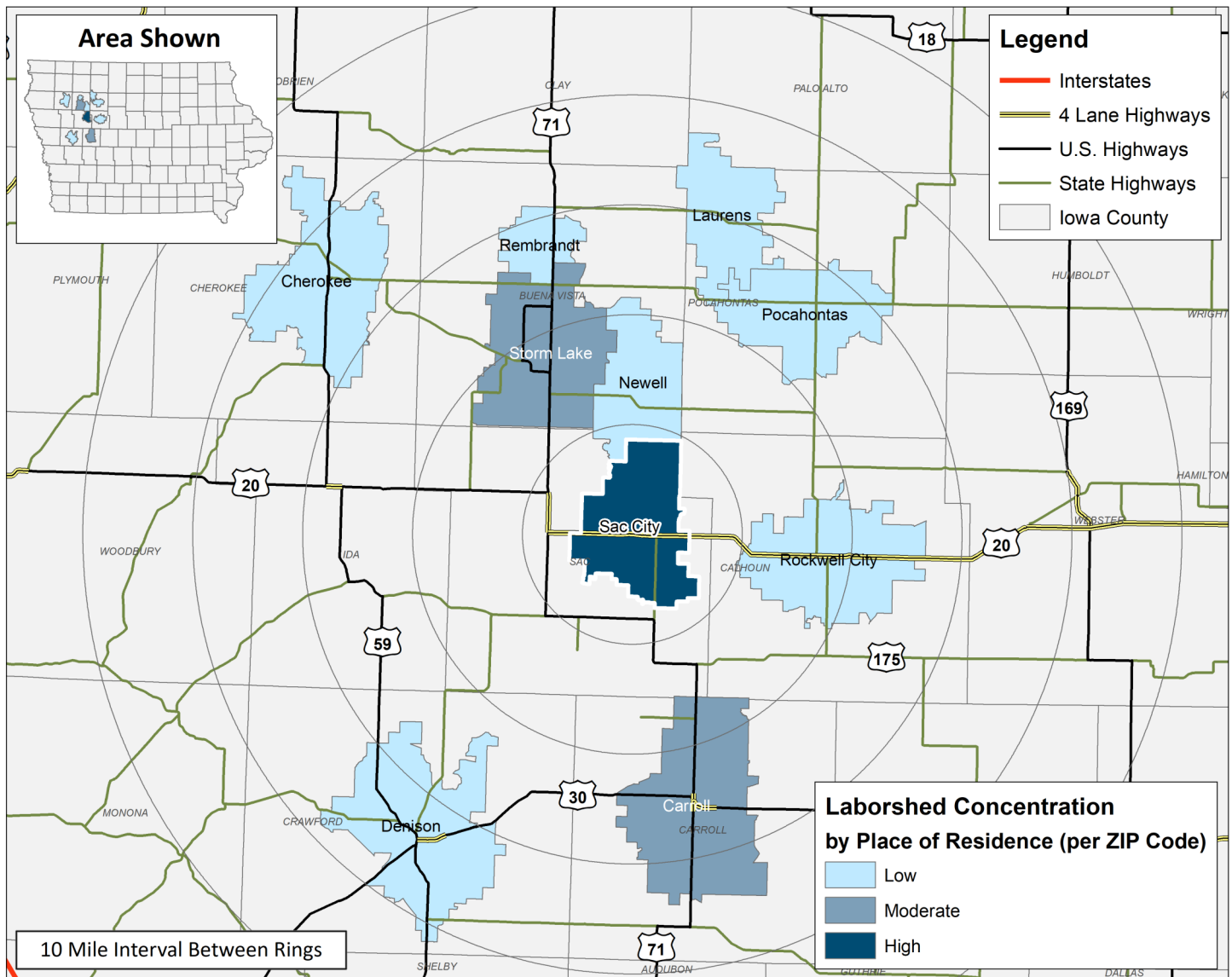
# LABOR CHARACTERISTICS

## WAREHOUSE & DISTRIBUTION



### SAC CITY LABORSHED AREA

CONCENTRATION OF RESPONDENTS WITHIN THE LABORSHED AREA  
WITH TRANSFERABLE EXPERIENCE/SKILLS BY PLACE OF RESIDENCE



Workers who have transferable experience/skills in the industry are currently commuting an average of 15 miles one way for work. Those who are likely to change/accept employment are willing to commute an average of 21 miles one way for the right employment opportunity.

FOR MORE INFORMATION REGARDING THE SAC CITY, IA LABORSHED, CONTACT:

# LABOR CHARACTERISTICS



## WAREHOUSE & DISTRIBUTION

### ESTIMATED AVAILABLE LABOR PER OCCUPATIONAL CATEGORY:

- Heavy & Tractor-Trailer Truck Drivers - 1,196
- Installation, Maintenance, & Repair Workers - 479
- Laborers & Freight, Stock, & Material Movers, Hand - 123
- Light Truck or Delivery Services Drivers - 122
- Production Workers, All Other - 956
- Shipping, Receiving, & Traffic Clerks - 118
- Stock Clerks & Order Fillers - 119
- Supervisors of Mechanics, Installers, & Repairers - 238
- Supervisors of Production & Operating Workers - 120
- Team Assemblers - 121
- Transportation, Storage, & Distribution Managers - 117

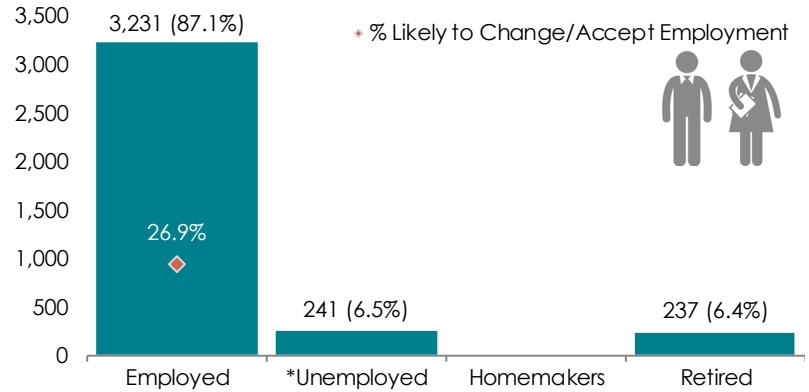
AN ESTIMATED TOTAL OF **3,709** PEOPLE IN THE LABORSHED AREA

### UNDEREMPLOYMENT (ESTIMATED):

- Low hours - 0.0%
- Low income - 0.0%
- Mismatch of skills - 3.2% (13)
- Total - 3.2% (13)

(Individuals counted only once when estimating Total Underemployment.)

### ESTIMATED TOTAL BY EMPLOYMENT STATUS (PERCENTAGE):



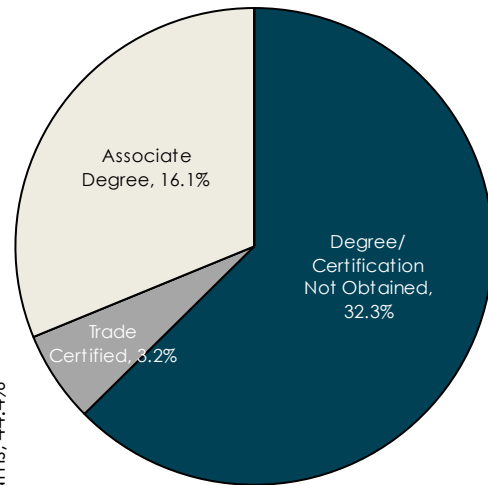
\*Employment status is self-identified by the survey respondent. The unemployment percentage does not reflect the unemployment rate published by the U.S. Bureau of Labor Statistics, which applies a stricter definition.

### EMPLOYMENT STATS:

- 64.5% paid an hourly wage
- 83.9% are/were employed full-time
- 16.1% are/were employed part-time
- 9.7% are/were self-employed
- 22.2% hold two or more jobs
- Currently working an average of 53 hours/week

### EDUCATIONAL LEVEL:

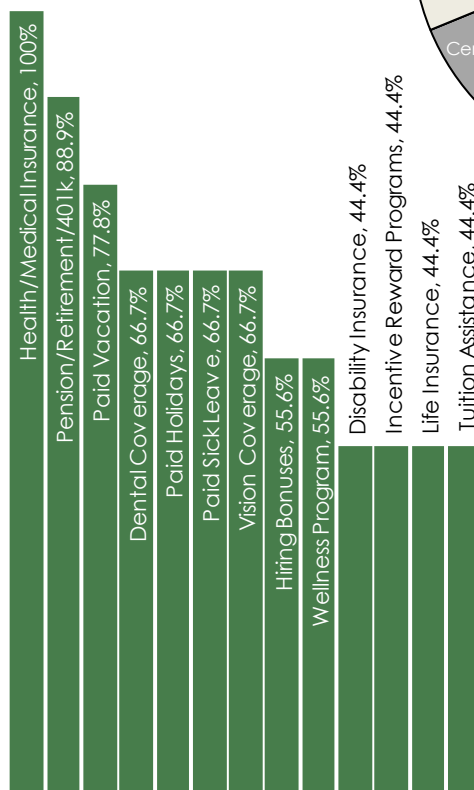
(51.6% HAVE AN EDUCATION BEYOND HIGH SCHOOL)



### CURRENT BENEFITS:



### DESIRED BENEFITS:



### TOP JOB SEARCH RESOURCES:

(For those seeking employment opportunities, by use.)

- Internet - 63.3%
  - [www.indeed.com](http://www.indeed.com)
  - [www.facebook.com](http://www.facebook.com)
  - [www.iowaworks.gov](http://www.iowaworks.gov)
- Newspapers - 30.0%
- IowaWORKS Centers - 26.7%
- Newspapers - 26.7%



### WORKPLACE FLEXIBILITY:

(by percent of interest)

- Varied shifts - 66.7%
- Cross-training - 62.5%
- Job teams - 62.5%
- Job sharing - 25.0%
- Seasonal work - 44.4%
- Temporary work - 44.4%



# LABOR CHARACTERISTICS



## WAREHOUSE & DISTRIBUTION

OCCUPATION	OCCUPATIONAL CODE	MEAN WAGE	ENTRY WAGE	EXPERIENCED WAGE	MEDIAN WAGE	MEAN ANNUAL SALARY
Automotive Service Technicians and Mechanics	49-3023	\$20.53	\$14.20	\$23.70	\$21.26	\$42,705
Bus and Truck Mechanics and Diesel Engine Specialists	49-3031	\$19.54	\$15.49	\$21.56	\$18.53	\$40,633
Cleaners of Vehicles and Equipment	53-7061	\$13.81	\$11.52	\$14.96	\$13.23	\$28,734
Conveyor Operators and Tenders	53-7011	\$17.43	\$14.50	\$18.89	\$16.93	\$36,246
Dispatchers, Except Police, Fire, and Ambulance	43-5032	\$26.62	\$17.05	\$31.41	\$25.76	\$55,379
First-Line Supervisors of Mechanics, Installers, and Repairers	49-1011	\$32.85	\$25.64	\$36.46	\$31.77	\$68,328
First-Line Supervisors of Production and Operating Workers	51-1011	\$27.86	\$19.50	\$32.04	\$27.29	\$57,949
Heavy and Tractor-Trailer Truck Drivers	53-3032	\$19.48	\$14.98	\$21.74	\$18.47	\$40,526
Industrial Machinery Mechanics	49-9041	\$22.24	\$15.77	\$25.48	\$21.55	\$46,262
Industrial Truck and Tractor Operators	53-7051	\$18.70	\$16.11	\$19.99	\$18.60	\$38,889
Inspectors, Testers, Sorters, Samplers, and Weighers	51-9061	\$21.42	\$14.84	\$24.71	\$21.71	\$44,548
Installation, Maintenance, and Repair Workers, All Other	49-9099	\$19.50	\$15.10	\$21.70	\$20.72	\$40,554
Laborers and Freight, Stock, and Material Movers, Hand	53-7062	\$16.46	\$12.40	\$18.50	\$15.99	\$34,247
Light Truck or Delivery Services Drivers	53-3033	\$15.76	\$9.40	\$18.94	\$13.44	\$32,785
Maintenance and Repair Workers, General	49-9071	\$19.62	\$14.07	\$22.40	\$19.97	\$40,815
Production Workers, All Other	51-9199	\$14.79	\$11.68	\$16.35	\$14.28	\$30,773
Production, Planning, and Expediting Clerks	43-5061	\$24.64	\$17.26	\$28.33	\$24.46	\$51,251
Shipping, Receiving, and Traffic Clerks	43-5071	\$16.82	\$12.83	\$18.82	\$16.40	\$34,994
Stock Clerks and Order Fillers	43-5081	\$14.09	\$8.59	\$16.83	\$13.67	\$29,300
Transportation, Storage, and Distribution Managers	11-3071	\$37.89	\$32.38	\$40.64	\$37.34	\$78,805
Weighers, Measurers, Checkers, and Samplers, Recordkeeping	43-5111	\$16.86	\$14.10	\$18.24	\$16.99	\$35,073

The 2019 Iowa Wage data for the Sac City Laborshed area was produced by the Labor Force & Occupational Analysis Bureau to provide communities local information on wages by occupation. The source of the wage and employment data is based on the May 2018 OES estimates. Additional occupational wage and employment data can be found at [www.iowalmi.gov/laborshed](http://www.iowalmi.gov/laborshed).